



konan

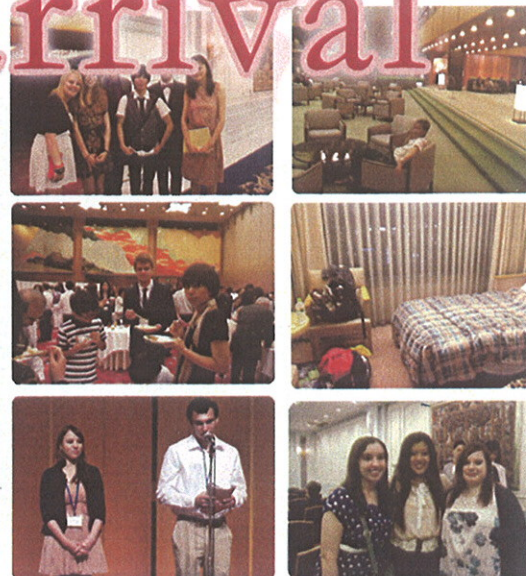
2012-2013

Leed
Lyon
Tour
Cologne
Ariz
Carlet
Arizona
Chin
Australia
Kore
Buffalo
Germany
Canada
Pittsburg
France
Eng
Illinois
Haw

YEAR IN JAPAN PROGRAM

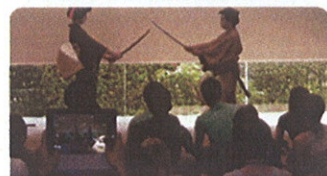
THE FIRST STEPS

arrival



clubs

orientation



konan tour



It was early September when we all finally achieved our dreams of coming to Japan. For some, it was a return trip; for others, it was a completely new experience. Although some of us came to Japan already as friends, as we all gathered together new friendships began to form. Upon our arrival, we were welcomed with the beautiful summer weather and mountain scenery of Kobe.

Our first days were spent at the Hotel Okura with a spectacular view of downtown Kobe. We were introduced at the welcome party; taught at orientation; guided around Konan campus; and invited to join clubs. It was a great way to begin the year and get adjusted before meeting our host families and beginning our new lives in Japan.



素晴らしい人

BEHIND
SCENES



KIEC
Office



KIEC
director

RESIDENT DIRECTOR

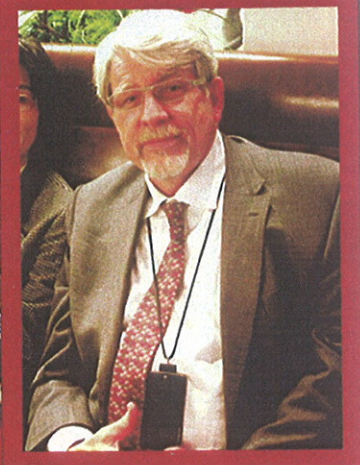
Elizabeth Oyler

president & vice president

Joshua Frankle & William Wainwright



JAPANESE
teachers



DAVID W. RYCROFT



SEEING KONAN

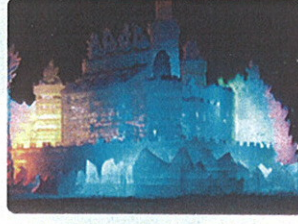
exploration



winter



autumn



autumn



11.11.2012 greetings from Kobe



Throughout our time in Japan, we enjoyed its many seasons. In the fall, we started our classes and experienced foreign events like the German Karneval. When winter came, we enjoyed Christmas with those we had grown close to. After winter, we then celebrated the coming of the new year. Now in the spring, amidst the falling cherry blossoms, we say good bye to those graduating from Konan and wish them the best.



spring



MEETING JAPAN

relationships



international events



potluck



farewell party



Pizza party



Through the help of the KIEC, we always had the opportunity to interact with our host families and fellow Japanese students.

During our time in Japan, we have formed unbreakable bonds with not only each other, but with our host families, dormitory friends, and Japanese friends as well. Many of us will find it hard to say goodbye to these important people, but it is known that it is not a final goodbye, but a promise to see each other again. These bonds will stretch across the globe but they will not break or be halted as easily, as say, the JR line.



SAS



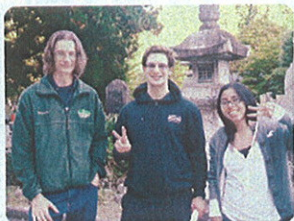
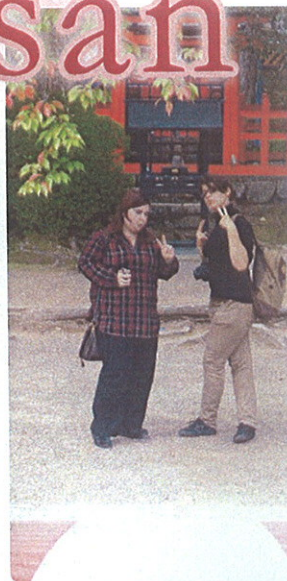
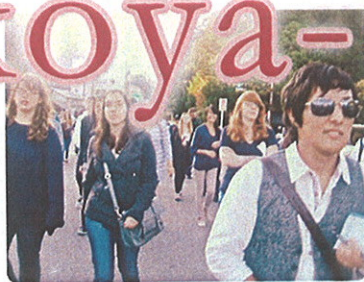
巡礼する

HISTORY TREES

koya-san

Koya-san was our first big field trip of the year. By bus, we left early in the morning for our overnight stay in the mountains. It was the first time we had all been gathered together since our arrival, now packed into one large bus; conversations were long and full of laughter.

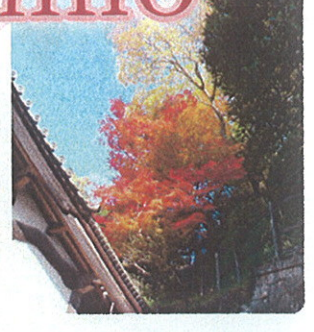
While at Koya-san, we stayed at one of the local monasteries, a new and unfamiliar experience for many of us: tatami mats, vegetarian cuisine, and Buddhist meditation were a few of the highlights from our trip.



東大寺

NEVER
FORGET

nara & yoshino



Yoshino and Nara was our second field trip. On our bus ride, students gave presentations about the Yoshino and Nara. We visited Nara's most famous temple, Todaiji, and were given a personal tour by the head monk himself. This time we stayed at a big travel lodge with a great open air bath and a delicious nabe dinner to boot. Once again, we gathered early and set off by bus to Yoshino.





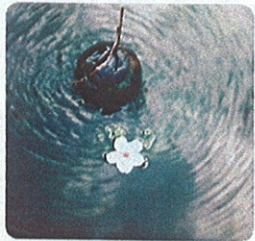
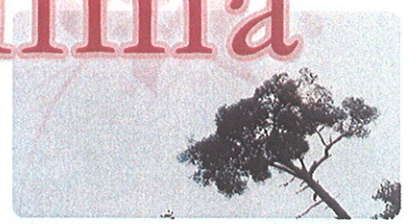
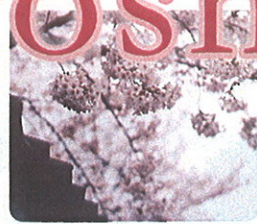
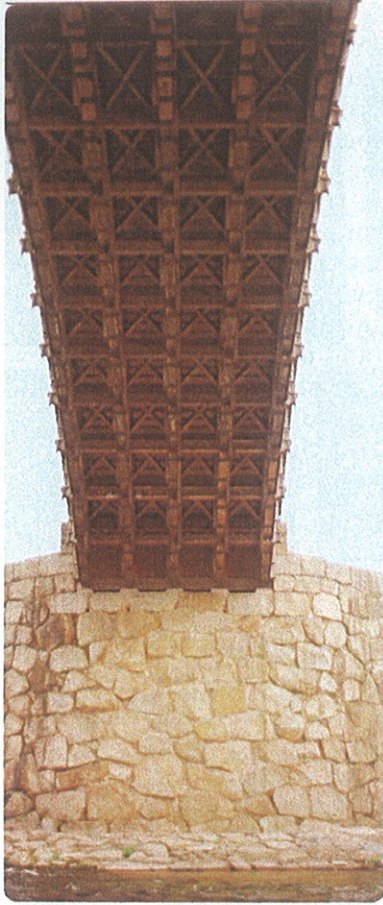
At Yoshino, we hiked to famous literary and religious spots. But our ascent up the mountain was even more memorable. The momiji were incredible and as we kept walking, the view expanded into a beautiful mountain vista. Even though it was rainy and the ground was a little wet, everyone enjoyed the great sight from the top of the mountain (and not to mention the delicious bentos we carried with us). We even stopped by a shop to make our own chopsticks to bring home as gifts!



いつも思い出す

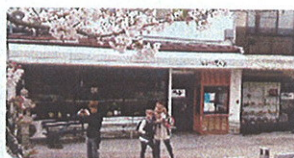
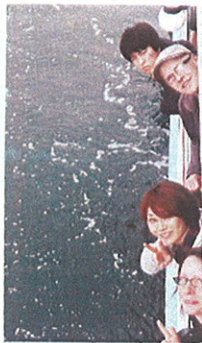
NEVER
FORGET

hiroshima



Our final field trip to Hiroshima was an action-packed, three-day journey. We gathered together one last time on a March morning. Arriving by Shinkansen, our first stop was Hiroshima's famous Okonomimura. Afterwards, we visited some of Hiroshima's war memorials and museums, including the A-bomb dome which was the site of the dropping of the atomic bomb. Seeing the dome was a moving experience for everyone in their own way, and the museum and its grounds are something to be long remembered.

Our remaining days were spent traveling to Miyajima, Iwakuni, and Hagi. The Sakura were in full bloom, making sights like Iwakuni's famous bridge even better. Everyone had a great time as we moved around from place to place, taking pictures of the scenery, friends, and the food. It was the last field trip for the group, but it was full of laughter and unforgettable memories.



冒険に行こう

BEYOND

JAPAN

traveling



The YIJ program is more than just Japan, it's an international trip across the world. Many prefectures and countries are only a simple plane or train ride away. Students this year have taken Konan's Area Studies Program to Taiwan or have simply traveled for fun, in and out of Japan! This year's trips included Kyushu, Okinawa, Tokyo, Hokkaido, Mie, Korea and much more!



JAPAN STUDY ABROAD

2012-2013



*thank
for the
memories*